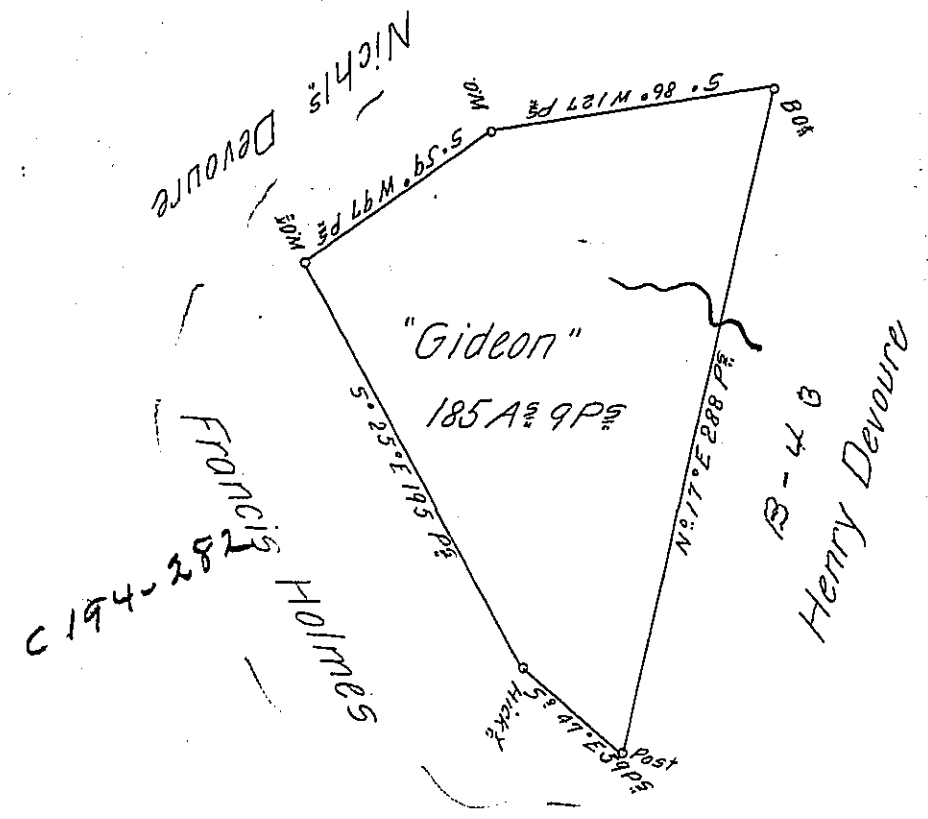


C 207-48  
MRS - MARTIN



A Draught of a Survey called "Gideon" situate on the Waters of Mingo Creek in Washington County containing 185 A & 9 P & the usual Allow<sup>ce</sup> for Roads & C. executed Apl 1<sup>st</sup> 1788 in Pursuance of a Warrant granted to Henry Devour for 200 A & dated Feb<sup>y</sup> 21<sup>st</sup> 1788.

Presley Nevill }  
Matt<sup>w</sup> Ritchie } D.S.

Jn<sup>o</sup> Lukens Esq<sup>r</sup> S. Genl

IN TESTIMONY that the above is a copy of the original remaining on file in the Department of Internal Affairs of Pennsylvania, made conformably to an Act of Assembly approved the 16th day of February, 1833, I have hereunto set my Hand and caused the Seal of said Department to be affixed at Harrisburg, this first day of August 1904

*James P. Brown*  
Secretary of Internal Affairs.